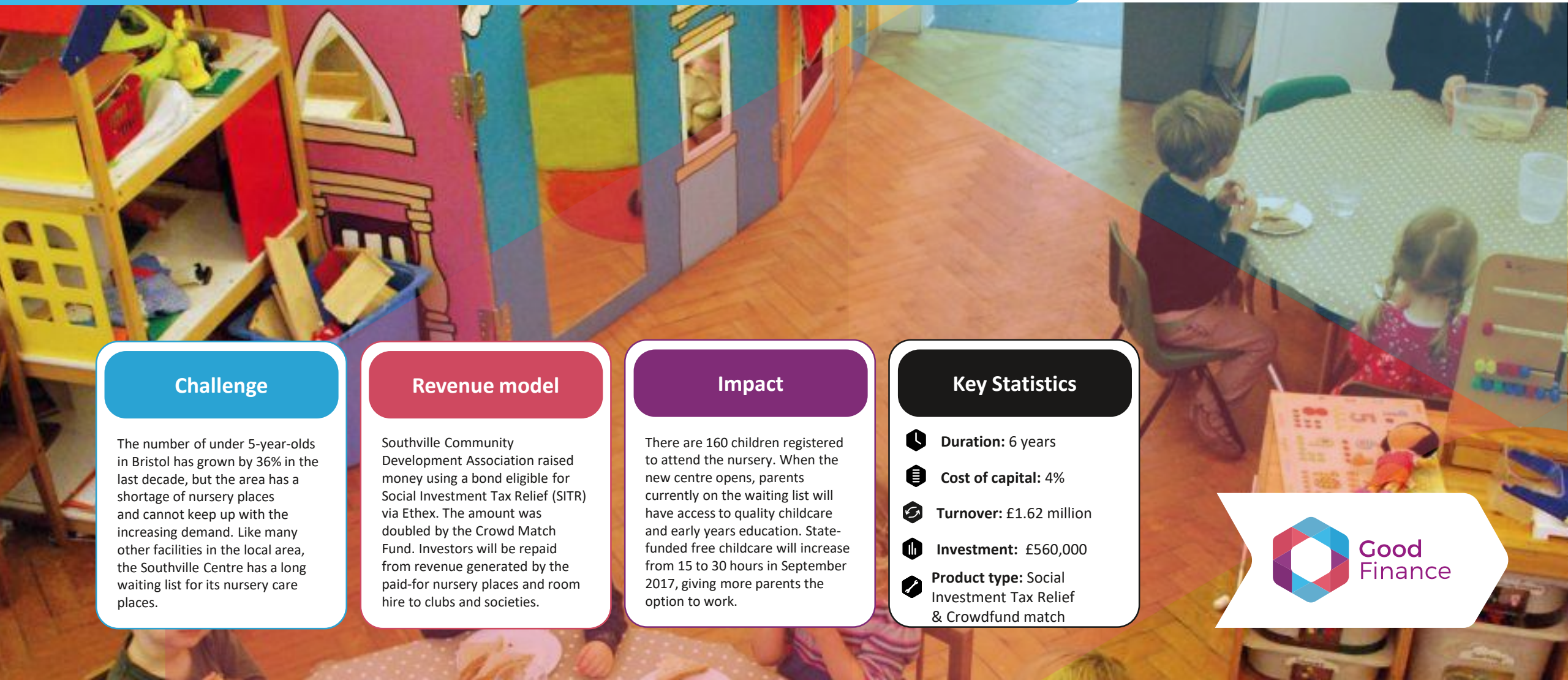




BS3 Community

<https://bs3community.org.uk/>



Challenge

The number of under 5-year-olds in Bristol has grown by 36% in the last decade, but the area has a shortage of nursery places and cannot keep up with the increasing demand. Like many other facilities in the local area, the Southville Centre has a long waiting list for its nursery care places.

Revenue model

Southville Community Development Association raised money using a bond eligible for Social Investment Tax Relief (SITR) via Ethex. The amount was doubled by the Crowd Match Fund. Investors will be repaid from revenue generated by the paid-for nursery places and room hire to clubs and societies.

Impact

There are 160 children registered to attend the nursery. When the new centre opens, parents currently on the waiting list will have access to quality childcare and early years education. State-funded free childcare will increase from 15 to 30 hours in September 2017, giving more parents the option to work.

Key Statistics

-  **Duration:** 6 years
-  **Cost of capital:** 4%
-  **Turnover:** £1.62 million
-  **Investment:** £560,000
-  **Product type:** Social Investment Tax Relief & Crowdfund match

