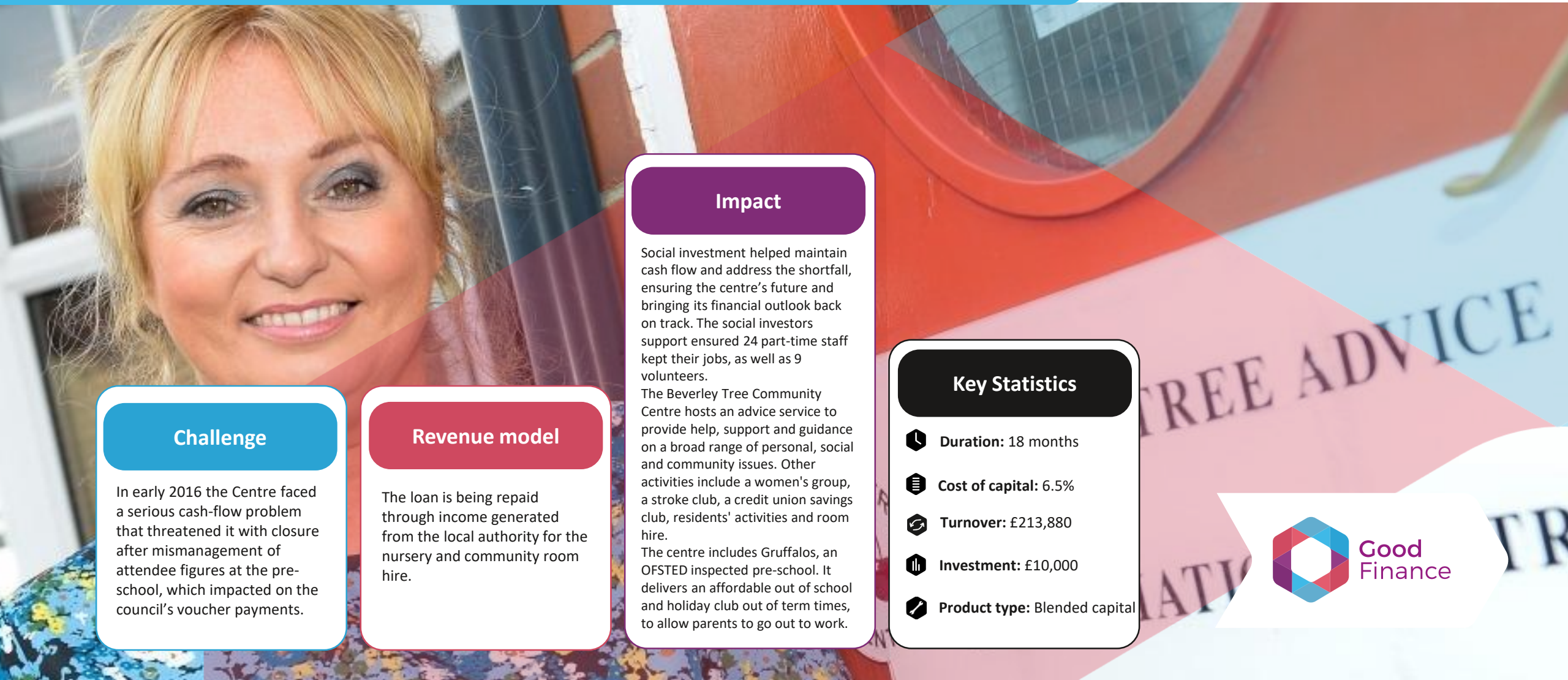




Beverley Tree Community Centre



Challenge

In early 2016 the Centre faced a serious cash-flow problem that threatened it with closure after mismanagement of attendee figures at the pre-school, which impacted on the council's voucher payments.

Revenue model

The loan is being repaid through income generated from the local authority for the nursery and community room hire.






Impact

Social investment helped maintain cash flow and address the shortfall, ensuring the centre's future and bringing its financial outlook back on track. The social investors support ensured 24 part-time staff kept their jobs, as well as 9 volunteers.

The Beverley Tree Community Centre hosts an advice service to provide help, support and guidance on a broad range of personal, social and community issues. Other activities include a women's group, a stroke club, a credit union savings club, residents' activities and room hire.

The centre includes Gruffalos, an OFSTED inspected pre-school. It delivers an affordable out of school and holiday club out of term times, to allow parents to go out to work.

Key Statistics

-  **Duration:** 18 months
-  **Cost of capital:** 6.5%
-  **Turnover:** £213,880
-  **Investment:** £10,000
-  **Product type:** Blended capital

