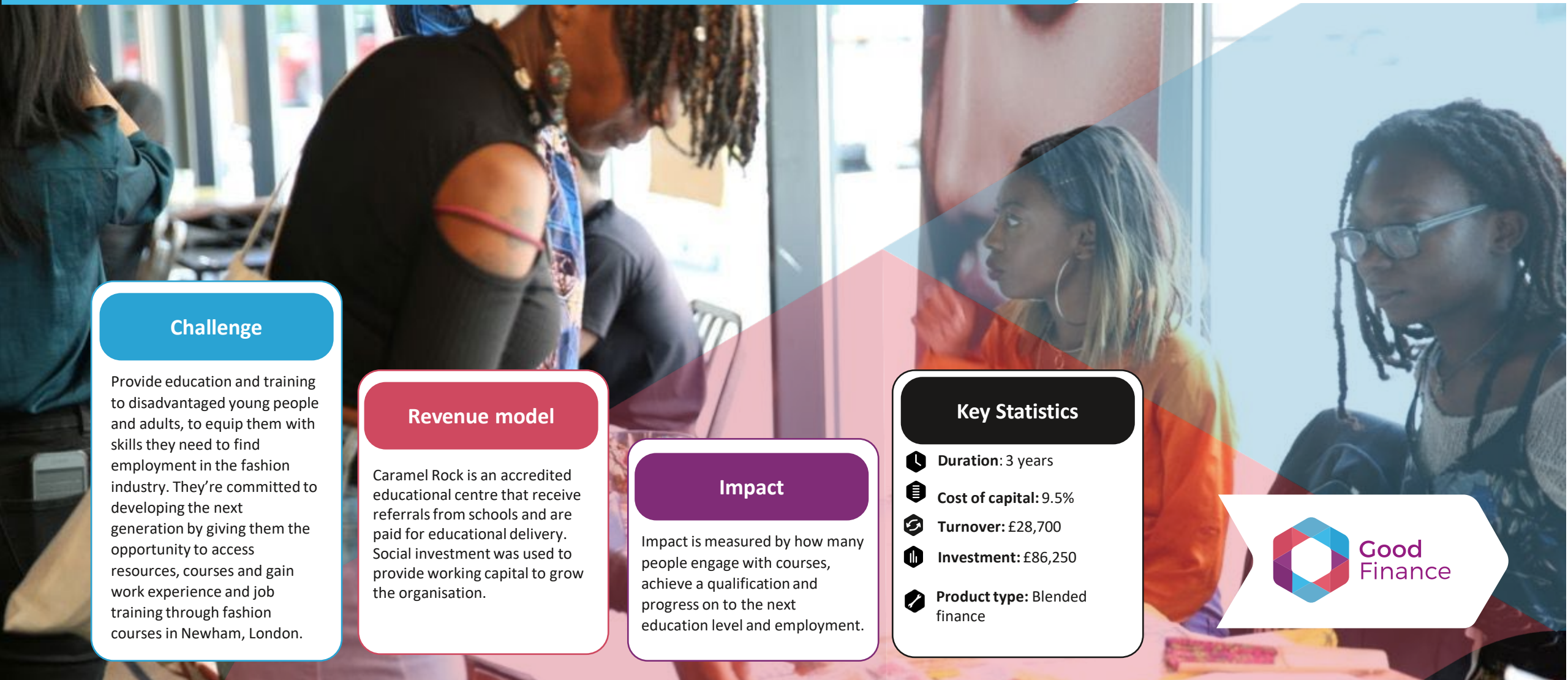




Caramel Rock

<https://caramelrock.com/>



Challenge

Provide education and training to disadvantaged young people and adults, to equip them with skills they need to find employment in the fashion industry. They're committed to developing the next generation by giving them the opportunity to access resources, courses and gain work experience and job training through fashion courses in Newham, London.






Revenue model

Caramel Rock is an accredited educational centre that receive referrals from schools and are paid for educational delivery. Social investment was used to provide working capital to grow the organisation.

Impact

Impact is measured by how many people engage with courses, achieve a qualification and progress on to the next education level and employment.

Key Statistics

-  **Duration:** 3 years
-  **Cost of capital:** 9.5%
-  **Turnover:** £28,700
-  **Investment:** £86,250
-  **Product type:** Blended finance

