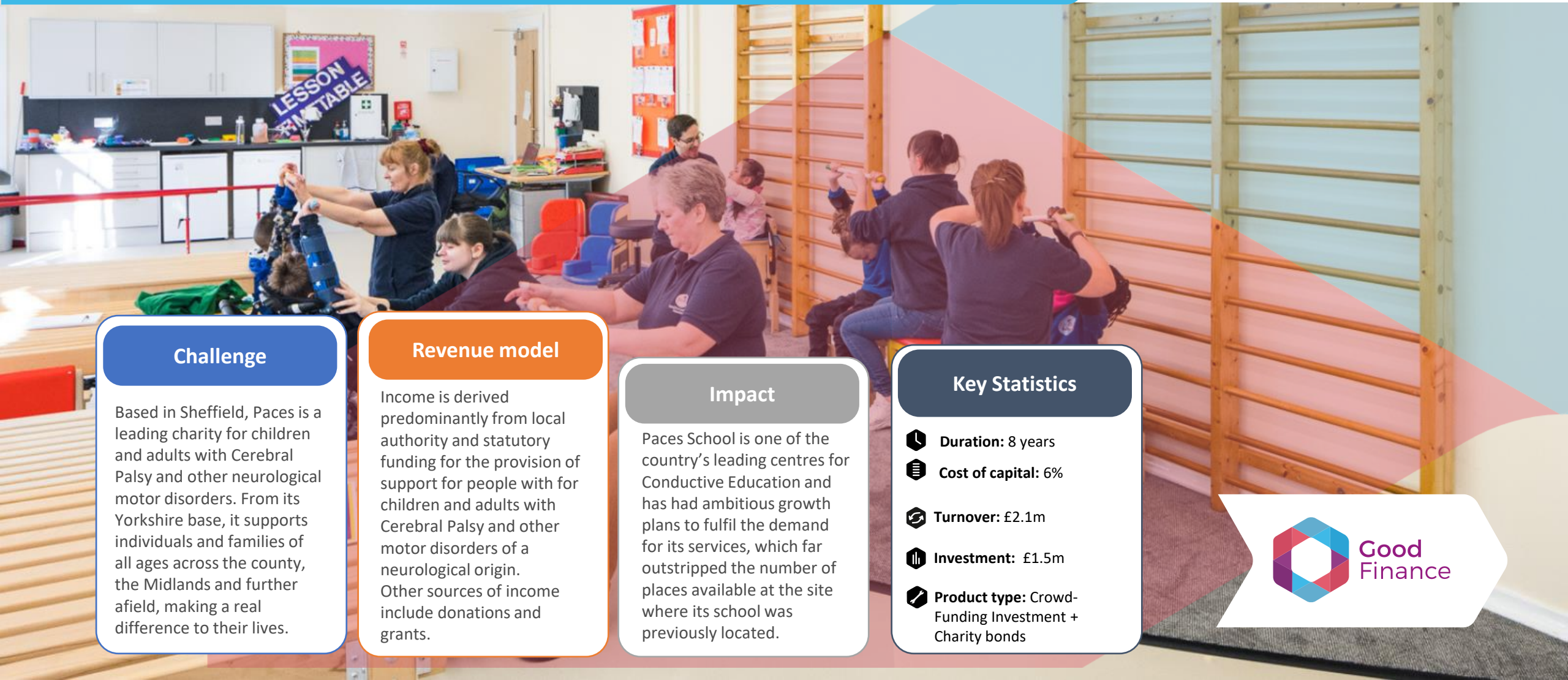




# PACES

<https://www.pacesheffield.org.uk/>

# Triodos Bank



## Challenge

Based in Sheffield, Paces is a leading charity for children and adults with Cerebral Palsy and other neurological motor disorders. From its Yorkshire base, it supports individuals and families of all ages across the county, the Midlands and further afield, making a real difference to their lives.

## Revenue model

Income is derived predominantly from local authority and statutory funding for the provision of support for people with for children and adults with Cerebral Palsy and other motor disorders of a neurological origin. Other sources of income include donations and grants.

## Impact

Paces School is one of the country's leading centres for Conductive Education and has had ambitious growth plans to fulfil the demand for its services, which far outstripped the number of places available at the site where its school was previously located.

## Key Statistics

- Duration:** 8 years
- Cost of capital:** 6%
- Turnover:** £2.1m
- Investment:** £1.5m
- Product type:** Crowd-Funding Investment + Charity bonds

