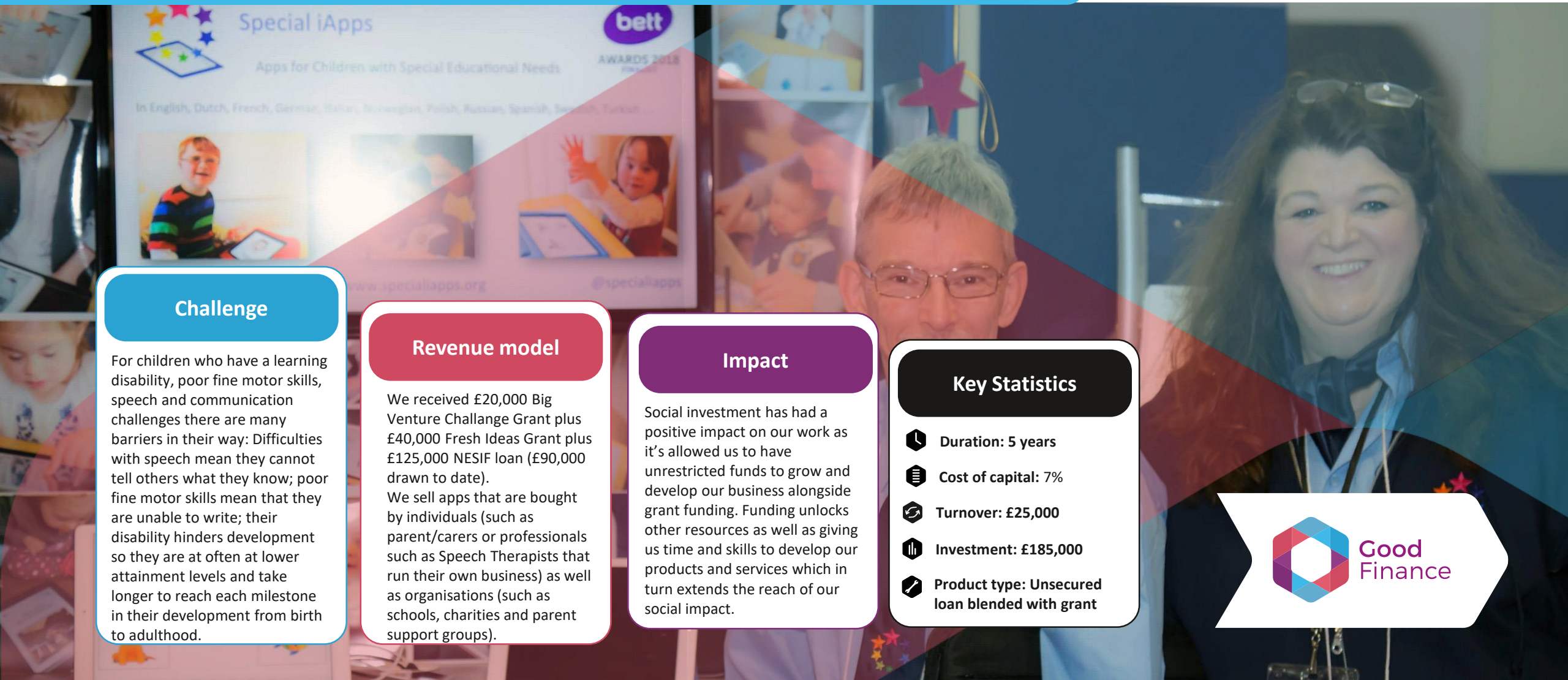




Special iApps C.I.C

www.specialiapps.org

Northstar
Ventures



Challenge

For children who have a learning disability, poor fine motor skills, speech and communication challenges there are many barriers in their way: Difficulties with speech mean they cannot tell others what they know; poor fine motor skills mean that they are unable to write; their disability hinders development so they are at often at lower attainment levels and take longer to reach each milestone in their development from birth to adulthood.






Revenue model

We received £20,000 Big Venture Challenge Grant plus £40,000 Fresh Ideas Grant plus £125,000 NESIF loan (£90,000 drawn to date). We sell apps that are bought by individuals (such as parent/carers or professionals such as Speech Therapists that run their own business) as well as organisations (such as schools, charities and parent support groups).

Impact

Social investment has had a positive impact on our work as it's allowed us to have unrestricted funds to grow and develop our business alongside grant funding. Funding unlocks other resources as well as giving us time and skills to develop our products and services which in turn extends the reach of our social impact.

Key Statistics

-  **Duration: 5 years**
-  **Cost of capital: 7%**
-  **Turnover: £25,000**
-  **Investment: £185,000**
-  **Product type: Unsecured loan blended with grant**

